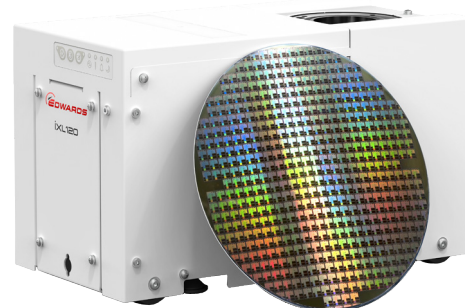


iXL120 Dry Pump

iXL120 is a compact, low energy, 110 m³/h dry pump for wafer handling and other clean duty applications. It provides fast pump down of load lock chambers with extremely low energy consumption.

iXL120 is one of the smallest and lightest pumps available for load lock and clean applications. It's low vibration and low noise levels make it ideal for mounting on-tool or within a fab's waffle floor, helping to save valuable fab floor space. A Green Mode allows reduced utilities usage during idle periods, lowering utility costs and helping to save the environment!



Features and Benefits

- Class leading chamber pump down time reduces total average cycle time (TACT)
- Only 0.55kW¹ power consumption helps minimise customer cost of ownership
- Green Mode can reduce power consumption by up to 92% during idle periods
- Up to 35°C water supply helps reduce facility cooling water requirements
- Extremely small and light, helping to save valuable fab space
- Oil lubricated precision bearings ensure smooth, low vibration operation with no routine maintenance
- Unique dual inlet arrangement allows efficient foreline routing and location options
- Zero nitrogen purge option eliminates the need for a nitrogen supply, saving installation and operating costs
- A single variant covers the supply voltage range 200-460 V, 50/60 Hz

¹ Average power at ultimate pressure and 700T exhaust pressure

Technical data

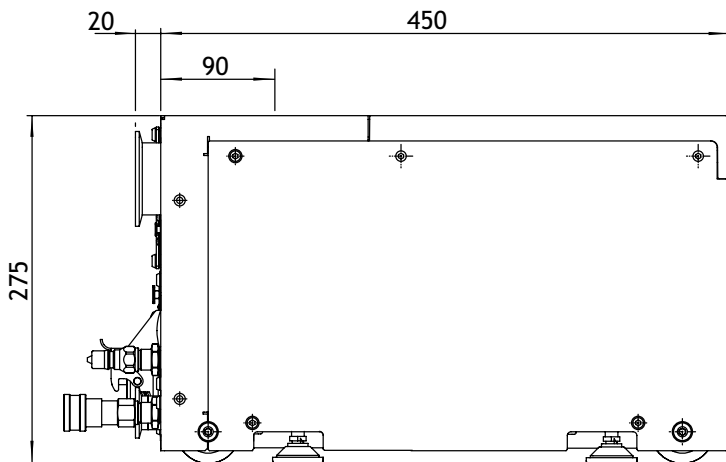
		iXL120	iXL120N
Peak speed	m ³ /h/ cfm / l/min	110/65/1833	110/65/1833
Ultimate pressure (typical)	mbar / Torr / Pa	0.013/0.009/1.3	0.013/0.009/1.3
Power at ultimate ¹	kW	0.55	0.55
Power in Green Mode	kW	0.045	0.045
Inlet connection	Vertical/Horizontal	ISO63/NW50	ISO63/NW50
Outlet connection		NW25	NW25
Cooling water connection		Optional	Optional
Nitrogen connection		n/a	¼" tube fitting
Water flow ²	l/m	1	1
Typical purge flow	slm	0	5
Weight	kg	59	59

¹ Average power at 700T exhaust pressure
² Flow with optional Constant Flow Valve fitted

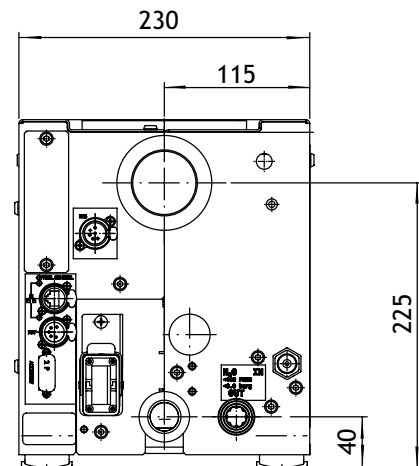
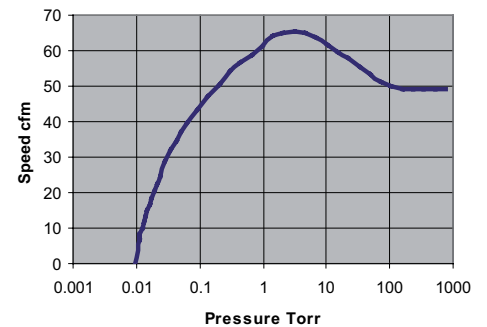
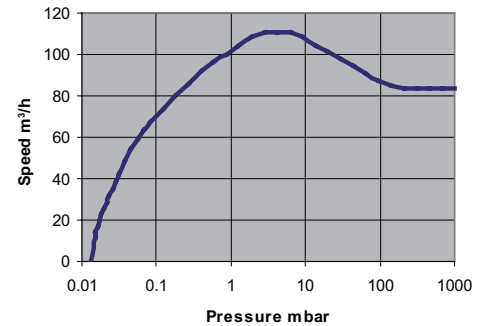
Ordering Information

iXL120 and iXL120N pumps can be supplied with a range of Tool Interfaces (MicroTIM), water fittings and other options. Contact Edwards for advice on options and part number.

Dimensions



Performance



Global contacts

EUROPE

UK Crawley +44 1293 528844
 UK (local rate) 08459 212223
 Belgium Brussels +32 2 300 0730
 France Paris +33 1 4121 1256
 Germany Munich 0800 000 1456
 Italy Milan +39 02 48 4471

USA

Niagara (toll free) +1 800 848 9800
 BRAZIL
 Sao Paulo +55 11 3952 5000
 ISRAEL
 Qiryat-Gat +972 8 681 0633

ASIA PACIFIC

China (toll free) +86 400 111 9618
 India, Pune +91 20 4075 2222
 Japan, Yachiyo +81 47 458 8831
 Korea, Bundang +82 31 716 7070
 Singapore +65 6546 8408
 Taiwan R.O.C. Jhunan Town +886 3758 1000